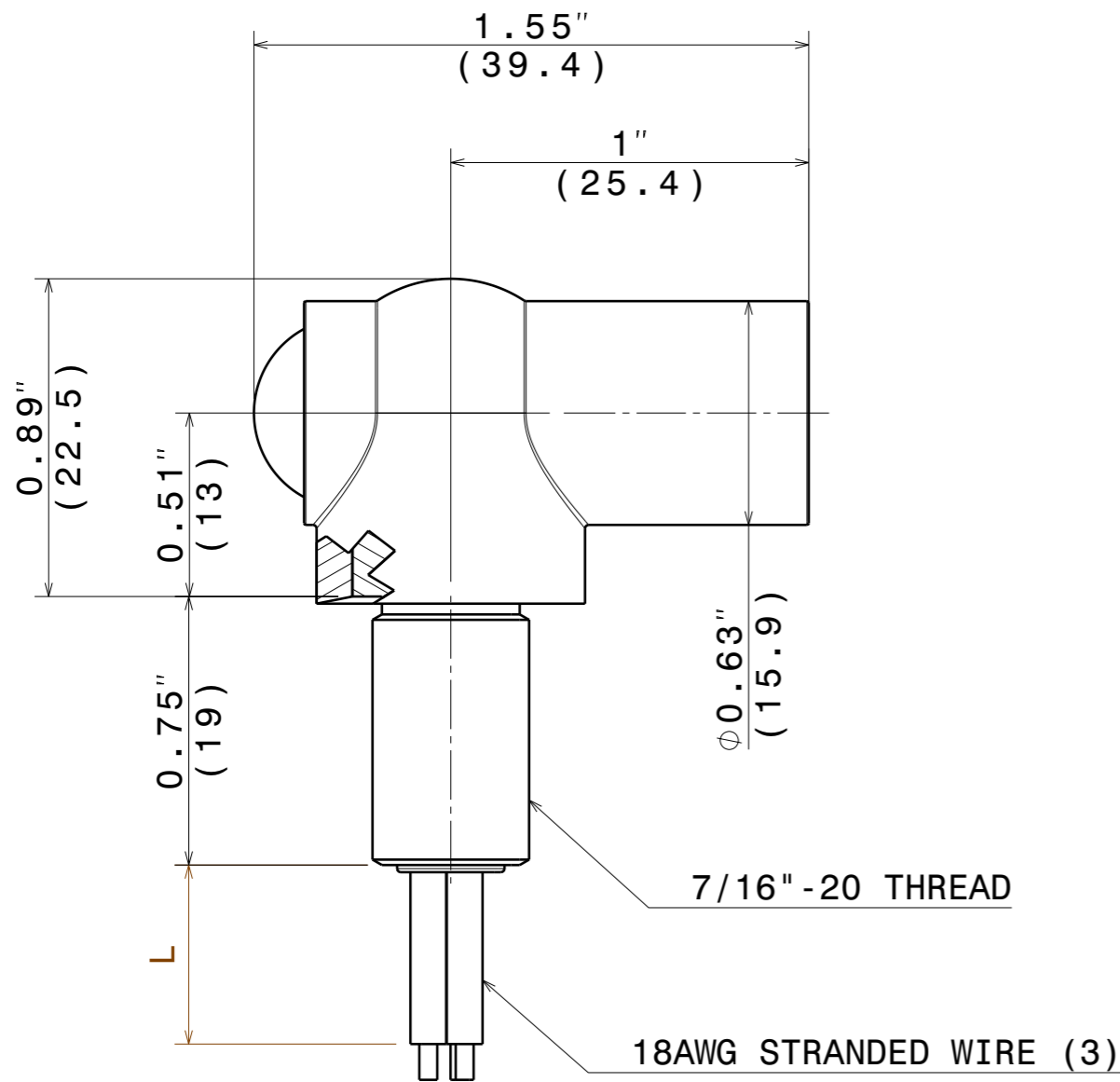
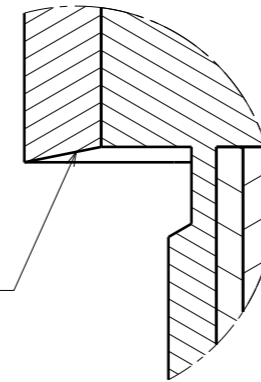


Rev.	Description	Date
-	INITIAL RELEASE	2/17/12

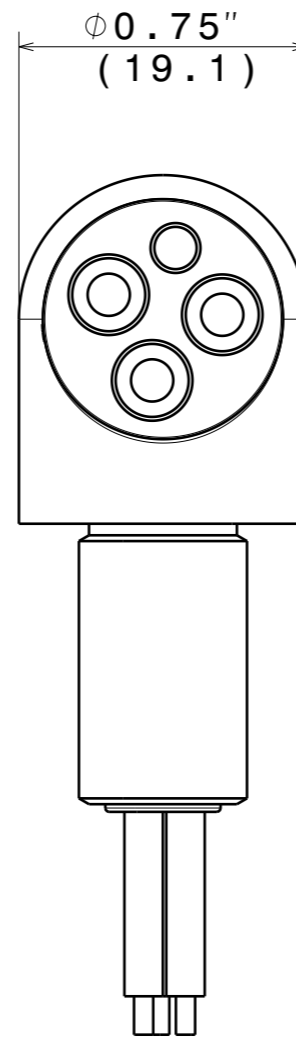


Front view

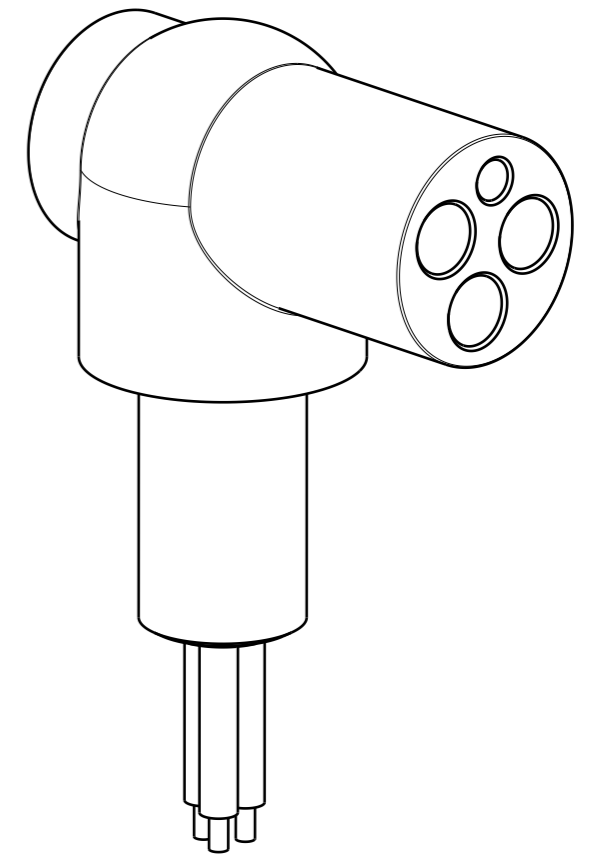
Integrated seal compresses when installed



Seal Detail



Right view



Isometric view

Socket Material: Beryllium Copper, Gold Plated  
 Connector Body: Neoprene  
 Cable Material: Cable specific, typically EPDM  
 Depth Rating: 10,000 ft. Seawater  
 Current Rating (18g): 10A / 300V

Bulkhead Insert/body: CA-360 Brass

Dimensions are for reference only. Normal variation in overmolding, cable manufacture, and other manufacturing processes will occur. Customer is responsible for verifying dimensions in critical applications.

	<small>© WET CONNECT 2012 ALL RIGHTS RESERVED</small> <small>THIS DOCUMENT IS SUPPLIED IN CONFIDENCE. NO REPRODUCTION OF THE DOCUMENT OR ANY PART OF IT OR OF THE ITEMS SHOWN THEREON MAY BE MADE WITHOUT THE COPYRIGHT OWNERS WRITTEN PERMISSION.</small>	
	<small>THIRD ANGLE PROJECTION</small>	<a href="http://www.wet-connect.com">www.wet-connect.com</a>
<small>Dimension format: unless otherwise noted</small>	<small>Inches (mm)</small>	<small>Engineer: DH</small>
<b>3-PIN FEMALE BULKHEAD, 90°, 7/16"-20 THREAD</b>		<small>Sheet</small>
<small>Drawing No:</small> <b>3P-F-BH-90-4375</b>	<small>Rev</small> -	<small>1</small> <b>1</b>